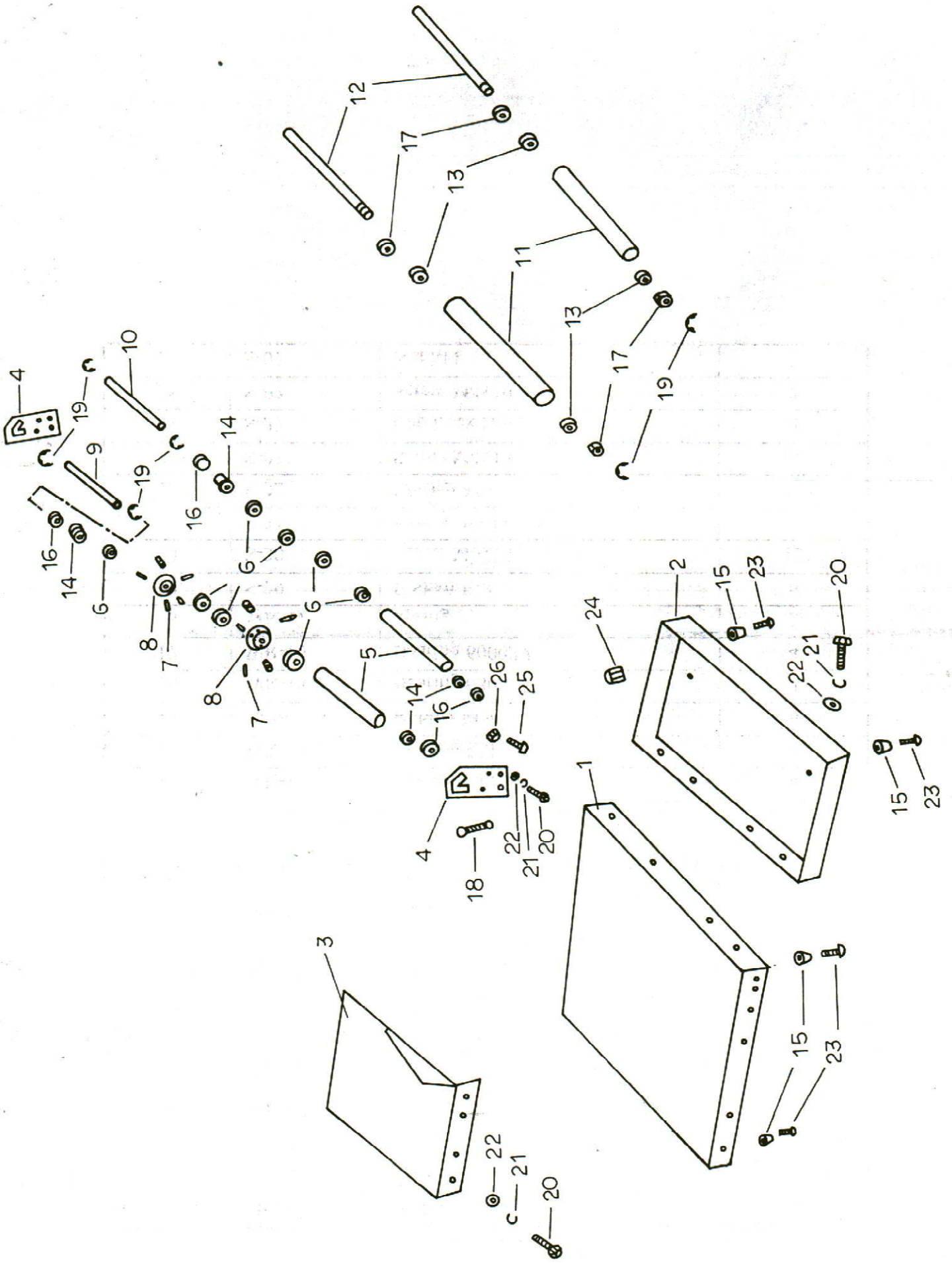


## L-TYPE SEALER MACHINE

CODE NO	PARTS NO	PARTS NAME	Q'TY	CODE NO	PARTS NO	PARTS NAME	Q'TY
01	HL-01	Bracket	1	32	HL-21	Shaft	1
02	HL-02	Control Plate	1	33	HL-22	P.E. Lid	2
03	HL-03	Rear Plate	1	34	HL-23	Stainless Roller	1
04	HL-04	Cover	1	35	H-26	Rubber Mat	4
05	HL-05	Aluminium Bracket	2	36	E-11	Support	2
06	HL-06	Ceramics	30	37	E-12A/B	P.C.Board 110/220V	1
07	HL-07	Flame Retardant 15mm		38	E-13A/B	Transformer 110/240V	1
08	HL-08	Heating Wire 0.32x3.2	1	39	E-03	Micro switch	1
09	HL-09	Hook	1	40	E-14	Strain Relief Bushing	1
10	H-25	Hook	1	41	E-04	Power Cord	1
11	H-24	Plate	2	42	E-05	Fuse Holder	1
12	H-23	Bushing	2	43	E-06C	Fuse	1
13	H-22	Spring	2	44	E-07	Variable Resistor	1
14	H-21	Cover	1	45	E-08A/B	Lamp	1
15	HL-10	Bushing	1	46	E-09	Knob	1
16	HL-11	Bushing	1	47	E-10	Power Switch	1
17	HL-12	Copper Turning	1	48	S-04	Screw M4x25	3
18	H-14	Shaft	2	49	S-07	Washer M4	11
19	HL-13	Bracket	3	50	S-07	Nut M4	27
20	HL-14	Bracket	1	51	S-27	Cap Lock Nut M4	8
21	H-13	Plate	1	52	S-28	Screw M4x40	8
22	H(L)-10	Plate	1	53	S-03	Screw M4x15	14
23	HL-15	Spring	4	54	S-01	Screw M4x6	32
24	HL-16	Sealing Arm 450x450	1	55	S-02	Screw M4x10	1
25	HL-17	Silicon Bracket	1	56	S-17	Screw M5x8	4
26	HL-18	Silicon Bracket	1	57	S-09	Screw M5x10	6
27	H-19B	Silicon	1	58	S-11	Spring Washer M5	14
28	HL-19	Silicon	1	59	S-12	Washer M5	34
29	F-09	Flame Retardant 10mm		60	S-10	Screw M5x12	8
30	HL-20	Spring	8	61	S-29	E-Shaft E-8	2
31	H-17	Lid	2				



## FILM DISPENSER

CODE NO	PARTS NO	PARTS NAME	Q'TY
01	WR-01	Plate	1
02	WR-02	Roller Plate	1
03	WR-03	Work Plate	1
04	WR-04	Plate	2
05	WR-05	SUS Roller	2
06	WR-06	EVA Roller	8
07	WR-07	Needle	6
08	WR-08	Roller	2
09	WR-09	Shaft	1
10	WR-10	Shaft	1
11	WR-11	SUS Roller	2
12	WR-12	Shaft	2
13	WR-13	Bearing Lid	4
14	WR-14	Bearing Lid	4
15	H-26	Rubber Mat	6
16	WR-15	Bearing 6800	4
17	WR-16	Bearing 6000ZZ	4
18	WR-17	Spring	2
19	S-29	E Shaft E-8	6
20	S-30	Screw M6x16	13
21	S-31	Spring Washer M6	13
22	S-32	Washer M6	13
23	S-03	Screw M4x15	6
24	S-27	Cap Lock Nut M4	2
25	S-02	Screw M4x10	2
26	S-07	Nut M4	2